

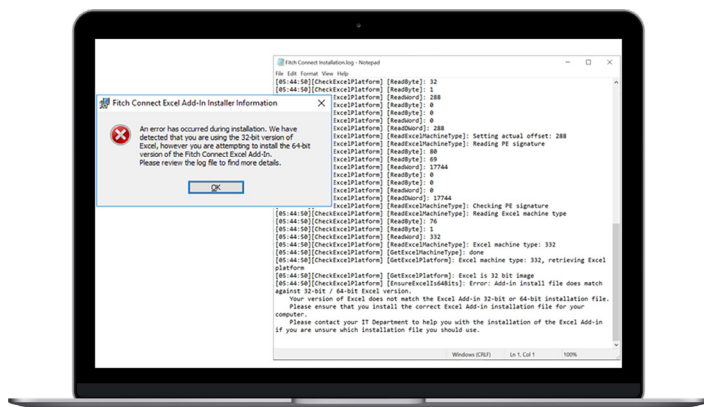
Fitch Connect Excel Add-In Release Notes

The latest release for the Fitch Connect Excel Add-In is now available for download. This version includes security and feature updates and customers are strongly encouraged to upgrade.

IMPORTANT NOTICE

Please note that as of 30 June 2020, previous versions of the Fitch Connect Excel Add-In below v1.7 will no longer operate.

- To check which version of the Excel Add-In you have, please follow these steps:
 - Select the 'About' menu icon from the Fitch Connect ribbon
 - Scroll down to the Fitch Connect Add-In Version
 - If the number displayed is less than v.1.7, then you need to update to the latest version of the Excel Add-In
- The newest version of the Excel Add-In continues to be compliant with the latest standards and minimizes any potential risk of security vulnerabilities
- Consult the Technical Specification guide available on the Fitch Connect [Support Pages](#) for the different installation options
- Please contact Client Services with any questions or additional support with the installation



Improved installation process

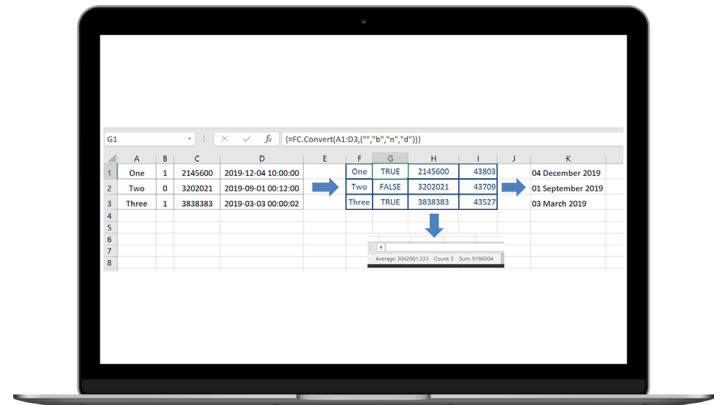
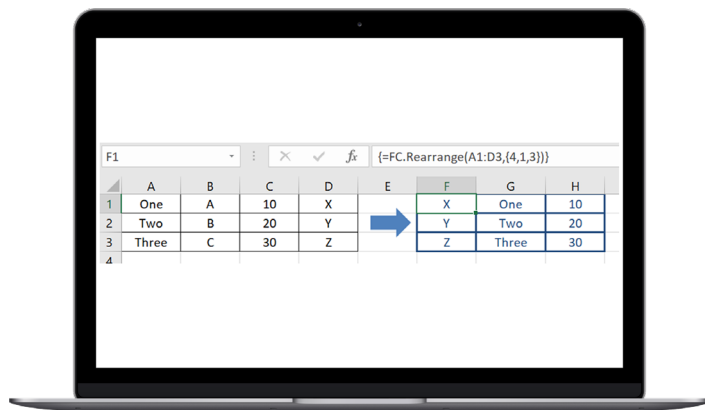
We have added a new diagnostic capability to improve the installation process for customers. It can identify common issues found during installation and provide clear steps on how to resolve them. This new feature checks the customer's computer to confirm that:

- The Excel version installed is supported
- The Operating System installed is supported
- The correct Add-In install file 32-bit or 64-bit Excel version has been selected
- There is enough space in temp file to extract setup files
- There is enough space to copy Add-In files to the selected drive
- The user permission is sufficient to create a target directory/drive and copy files

New Formula Feature

A new formula feature in the Excel Add-In can change data types and rearrange them in new columns.

- FC.Convert changes the data type of columns in an array
- FC.Rearrange selects and rearranges the columns in an array. This is particularly useful for values returned in text format that need to be in a date format



Support Documentation

The updated support documentation can be found on the Fitch Connect [Support Pages](#).

For More Information

Fitch Connect provides one ecosystem where content sets can be delivered via multiple delivery channels. In addition to the Fitch Connect Web delivery channel, Fitch Solutions content is available via an Application Program Interface (API), an Excel Add-In, and a Data feed. These delivery channels are purpose-built to serve the data consumption models of credit risk professionals everywhere. More information is available at www.fitchconnect.com or through a member of the Client Services team:

LONDON

+44 20 3530 2400

emeaclient.services@fitchsolutions.com

NEW YORK

+1 212 908 0800

usaclient.services@fitchsolutions.com

HONG KONG

+852 2263 9999

asiaclient.services@fitchsolutions.com

SINGAPORE

+65 6796 7231

asiaclient.services@fitchsolutions.com

TOKYO

+81 3 3288 2715

asiaclient.services@fitchsolutions.com

About Fitch Solutions

Fitch Solutions provides data, research, and analytics that help clients excel at managing their credit risk, offer deep insight into the debt investment market, and provide comprehensive intelligence about the macroeconomic environment.

All available on our platform, Fitch Connect, designed and built using our credit, macro, and industry expertise to help you make more informed decisions.